

TRENDS IN MIGRATION

Migration movements include not only entries of persons of foreign nationality, on which public attention tends to be focused, but also include movements of nationals and of emigrants. Net migration summarises the overall effect of these movements. Migration currently represents, in almost all OECD countries, the main source of increases in population.

Definition

Net migration is defined as the total number of immigrant nationals and foreigners minus the total of emigrant foreigners and nationals. Arrivals and departures for purposes such as tourism and business travel are not included in the statistics.

The net migration rate is expressed per 1 000 inhabitants. The three-year averages referred to concern the years 2006 to 2008 (end of period); and 1995 to 1997 (beginning of period).

Overview

Estonia, Poland, the Netherlands, Japan and Turkey are the only countries among those shown here that recorded negative or zero net migration in the three years to 2008. Ireland, Iceland, Luxembourg and Spain top the league showing net migration rates above 10 per thousand in recent years. The former emigration countries (Ireland, Italy, Portugal and Spain) figure prominently among those countries experiencing high net migration, a trend which is likely to continue in the future.

In most countries, net migration rates are higher than the levels recorded in the mid 1990s, with the increase being especially large in several Nordic countries, in countries in southern and continental Europe as well as in Australia. With the retirement of baby-boomers in the near future and the entry of smaller youth cohorts in the labour market, labour supply needs may well require a further rise in net migration in the future.

There are nonetheless a number of countries where net migration rates are currently lower than was the case five to ten years ago. These include Israel, New Zealand, the Russian Federation, Greece, Germany, Turkey and the Netherlands.

Comparability

The main sources of information on migration vary across countries. This may pose problems for the comparability of available data on inflows and outflows of migrants. However, since the comparability problems generally relate to the extent to which short-term movements are covered, taking the difference between arrivals and departures tends to eliminate the movements that are the main source of non-comparability.

Despite this feature, net migration data should be interpreted with care, because unauthorised movements are not taken into account in the inflows and these unauthorised movements are significant in some OECD countries. In addition, the data on outflows are of uneven quality, with departures being only partially recorded in many countries or having to be estimated in others.

The net migration rate is used to describe the contribution of international migration to population increase, the other component being natural increase, defined as the difference between the number of births and the number of deaths in a given year.

Sources

- OECD (2009), *Labour Force Statistics*, OECD, Paris.

Further information

Analytical publications

- OECD (2001), *Migration Policies and EU Enlargement: The Case of Central and Eastern Europe*, OECD, Paris.
- OECD (2003), *Migration and the Labour Market in Asia: Recent Trends and Policies – 2002 Edition*, OECD, Paris.
- OECD (2004), *Migration for Employment: Bilateral Agreements at a Crossroads*, OECD, Paris.
- OECD (2004), *Trade and Migration: Building Bridges for Global Labour Mobility*, OECD, Paris.
- OECD (2006), *Local Economic and Employment Development (LEED) – From Immigration to Integration: Local Solutions to a Global Challenge*, OECD, Paris.
- OECD (2009), *International Migration Outlook: SOPEMI 2009*, OECD, Paris.
- OECD (2008), *A Profile of Immigrant Populations in the 21st Century: Data from OECD Countries*, OECD, Paris.

Statistical publications

- OECD (2007), *OECD Employment Outlook – 2007 Edition*, OECD, Paris.

Methodological publications

- Dumont, J.-C. and G. Lemaître (2005), *Counting Immigrants and Expatriates in OECD Countries: A New Perspective*, OECD Social Employment and Migration Working Papers, No. 25, OECD, Paris.

Online databases

- OECD *International Migration Database*.



Net migration rate

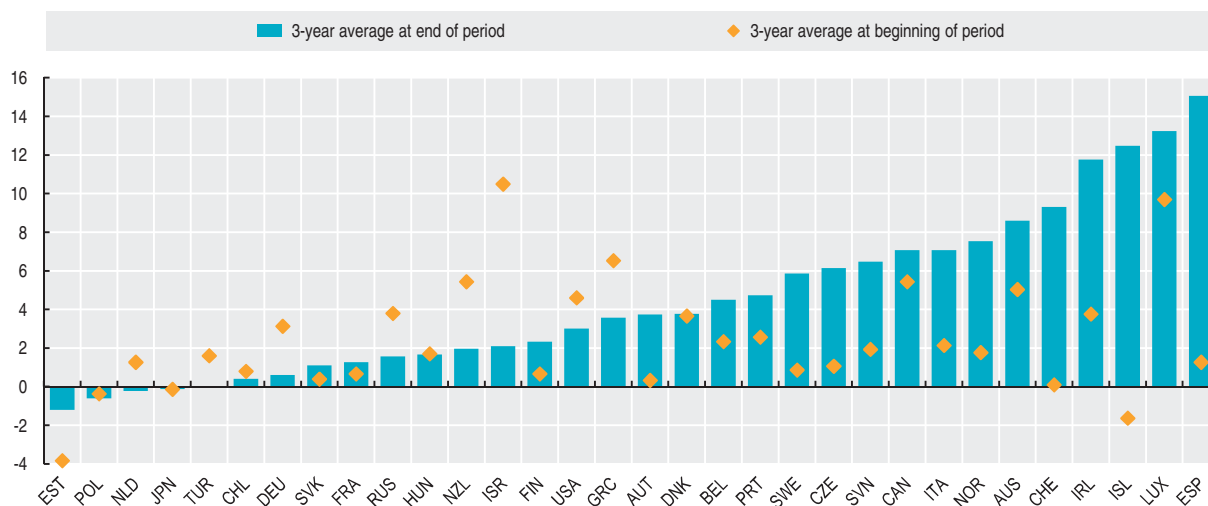
Per 1 000 inhabitants

	1995	1996	1997	1998	1999	2000	2001	2002	2003	2004	2005	2006	2007	2008
Australia	5.9	5.3	3.9	4.8	5.5	5.8	7.0	5.6	5.5	5.3	6.7	8.8	10.3	..
Austria	0.3	0.5	0.2	1.1	2.5	2.2	4.1	4.1	4.9	6.2	5.4	2.9	4.2	4.1
Belgium	2.7	2.4	1.9	2.1	2.7	2.5	3.4	4.0	3.9	4.2	4.5	4.8
Canada	5.5	5.6	5.2	3.9	5.2	6.5	8.1	7.0	6.7	6.6	7.0	6.9	7.3	..
Czech Republic	1.0	1.0	1.2	0.9	0.9	0.6	-0.8	1.2	2.5	1.8	3.5	3.4	8.1	6.9
Denmark	5.5	3.2	2.3	2.1	1.7	1.7	2.2	1.7	1.1	0.9	1.2	1.8	4.2	5.3
Finland	0.6	0.6	0.8	0.6	0.6	0.4	1.2	1.0	1.2	1.3	1.7	1.9	2.5	2.6
France	0.7	0.6	0.7	0.8	1.0	1.2	1.4	1.6	1.7	1.7	1.6	1.5	1.1	1.2
Germany	4.9	3.4	1.1	0.6	2.5	2.0	3.3	2.7	1.7	1.0	1.0	0.3	0.5	..
Greece	7.3	6.6	5.7	5.1	4.1	2.7	3.5	3.5	3.3	3.7	3.5	3.6	3.6	..
Hungary	1.7	1.7	1.7	1.7	1.7	1.7	1.0	0.4	1.6	1.8	1.7	1.9	1.4	..
Iceland	-2.6	-2.6	0.3	3.2	4.0	6.1	3.4	-1.0	-0.5	1.8	13.0	17.3	16.5	3.6
Ireland	1.6	4.6	5.1	4.5	6.4	8.4	10.0	8.4	7.8	11.6	15.9
Italy	1.6	2.6	2.2	1.6	1.8	3.1	2.2	6.1	10.6	9.6	5.2	6.4
Japan	-0.4	-0.1	0.1	0.3	-0.1	0.3	-0.4	0.5	-0.3	-0.4	-	-	-0.4	..
Luxembourg	11.2	8.9	9.0	9.6	10.9	8.2	2.5	5.8	12.0	9.6	13.1	11.4	12.5	15.8
Netherlands	0.9	1.1	1.8	2.7	2.6	3.4	3.2	1.5	-	-1.0	-1.7	-1.9	-0.4	1.6
New Zealand	7.7	6.6	2.0	-1.7	-2.3	-2.9	2.5	9.7	8.7	3.7	1.7	3.6	1.4	0.9
Norway	1.4	1.4	2.5	3.2	4.3	2.0	1.8	3.7	2.4	2.8	3.9	5.1	8.5	9.0
Poland	-0.5	-0.3	-0.3	-0.3	-0.4	-0.5	-0.4	-0.5	-0.4	-0.2	-0.3	-0.9	-0.5	-0.4
Portugal	2.2	2.6	2.9	3.2	3.7	4.6	6.3	6.8	6.1	4.5	3.6
Slovak Republic	0.5	0.4	0.3	0.2	0.3	0.3	0.2	0.2	0.3	0.5	0.6	0.7	1.3	1.3
Spain	0.9	1.3	1.6	3.1	4.9	8.9	10.1	15.7	14.5	14.7	15.0	14.2	16.0	..
Sweden	1.2	0.7	0.7	1.2	1.6	2.8	3.3	3.5	3.2	2.8	3.0	5.6	5.9	6.1
Switzerland	2.1	-0.8	-1.0	0.2	2.3	2.8	5.8	6.7	5.9	5.4	4.8	5.2	9.9	12.8
Turkey	1.6	1.6	1.6	1.5	1.5	-	-	-	-	-	-
United States	4.4	4.6	4.8	4.2	4.4	4.6	3.8	3.7	3.0	3.1	3.3	3.2	2.9	2.9
Chile	0.8	0.4	0.4
Estonia	-5.7	-4.0	-1.8	-0.8	-0.4	-0.7	-1.4	-1.1	-1.6	-1.4	-2.4	-2.5	-0.5	-0.6
Israel	11.9	10.4	9.2	8.2	11.9	9.8	6.2	3.3	1.6	2.0	2.4	2.4	2.1	1.8
Russian Federation	4.4	3.5	3.5	2.9	1.8	2.5	1.9	1.6	0.6	0.7	0.9	1.1	1.8	1.8
Slovenia	1.3	3.3	1.2	-1.1	1.2	1.3	1.5	0.9	1.7	1.0	3.2	3.1	7.1	9.2

StatLink <http://dx.doi.org/10.1787/823677044676>

Net migration rate

Per 1 000 inhabitants, annual average



StatLink <http://dx.doi.org/10.1787/817761100575>



From:
OECD Factbook 2010
Economic, Environmental and Social Statistics

Access the complete publication at:
<https://doi.org/10.1787/factbook-2010-en>

Please cite this chapter as:

OECD (2010), "Trends in Migration", in *OECD Factbook 2010: Economic, Environmental and Social Statistics*, OECD Publishing, Paris.

DOI: <https://doi.org/10.1787/factbook-2010-6-en>

This work is published under the responsibility of the Secretary-General of the OECD. The opinions expressed and arguments employed herein do not necessarily reflect the official views of OECD member countries.

This document and any map included herein are without prejudice to the status of or sovereignty over any territory, to the delimitation of international frontiers and boundaries and to the name of any territory, city or area.

You can copy, download or print OECD content for your own use, and you can include excerpts from OECD publications, databases and multimedia products in your own documents, presentations, blogs, websites and teaching materials, provided that suitable acknowledgment of OECD as source and copyright owner is given. All requests for public or commercial use and translation rights should be submitted to rights@oecd.org. Requests for permission to photocopy portions of this material for public or commercial use shall be addressed directly to the Copyright Clearance Center (CCC) at info@copyright.com or the Centre français d'exploitation du droit de copie (CFC) at contact@cfcopies.com.