

## TOTAL POPULATION

The size and growth of a country's population are both causes and effects of economic and social developments. The pace of population growth has slowed in all OECD countries.

Population projections, which give indications of likely changes in the future population size and structure, are a common demographic tool. They provide a basis for other statistical projections (e.g. service provision, employment) and as such, they are a very valuable tool for helping governments in their decision making.

### Definition

Data refer to the resident population, that is, they are a measure of the population that usually lives in an area. For countries with overseas colonies, protectorates or other territorial possessions, their populations are generally excluded. Growth rates are the annual changes resulting from births, deaths and net migration during the year. Working age population is those aged 15 to 64.

### Comparability

For most OECD countries, population data are based on regular, ten-yearly censuses, with estimates for intercensal years derived from administrative data. In several European countries, population estimates are based

entirely on administrative records. Population data are fairly comparable.

For some countries the population figures shown here differ from those used for calculating GDP and other economic statistics on a per capita basis, although differences are normally small.

Population projections are taken from national sources where these are available, but for some countries they are based on United Nations or Eurostat projections; the projection for the world comes from the UN. All population projections require assumptions about future trends in life expectancy, fertility rates and migration. Often, a range of projections is produced using different assumptions about these future trends. The estimates shown here correspond to the median or central variant.

EU28 does not include Croatia.

### Overview

In 2011, OECD countries accounted for 18% of the world's population of 7.0 billion. China accounted for 20% and India for 17%. Within the OECD, in 2011, the United States accounted for 25% of the OECD total, followed by Japan (10%), Mexico (9%), Germany (7%) and Turkey (6%).

In the three years to 2011, growth rates above the OECD population average (0.7% per year) were recorded in Israel, Mexico and Turkey (high birth rate countries) and in Australia, Canada, Chile, Luxembourg, Norway, Sweden, Switzerland, the United Kingdom and the United States (high net immigration). New Zealand and Ireland also recorded population growth rates above the OECD total which can be attributed to both a birth rate close to the replacement fertility rate (a total fertility rate of 2.1 children per woman) and a positive net migration rate.

In Hungary and Germany, populations declined mostly due to low birth rates. In Greece, the population decrease mainly concerns the working age population due to emigration. Growth rates were also negative in Estonia, Iceland and Portugal while they were very low, although still positive, in Japan, Italy and the Slovak Republic. The population of OECD countries is expected to grow by 0.3% per year until 2050.

### Sources

- For OECD member countries: national sources, United Nations and Eurostat.
- For Brazil, China, India, Indonesia, the Russian Federation and South Africa: United Nations, *World Population Prospects: The 2012 Revision*.

### Further information

#### Analytical publications

- OECD (2011), *Doing Better for Families*, OECD Publishing.
- OECD (2011), *The Future of Families to 2030*, OECD Publishing.

#### Statistical publications

- OECD (2013), *Society at a Glance: OECD Social Indicators*, OECD Publishing.

#### Methodological publications

- OECD (2013), *OECD Labour Force Statistics*, OECD Publishing.

#### Online databases

- OECD *Employment and Labour Market Statistics*.
- United Nations *World Population Prospects*.

#### Websites

- OECD Family Database, [www.oecd.org/social/family/database](http://www.oecd.org/social/family/database).



TOTAL POPULATION

Population levels

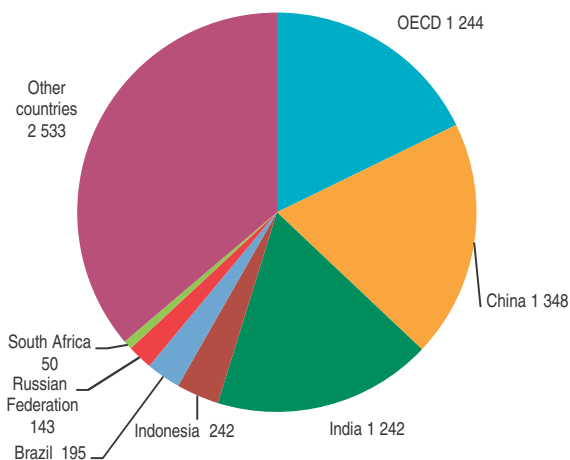
Thousands

	2002	2003	2004	2005	2006	2007	2008	2009	2010	2011	2012	2020	2050
Australia	19 651	19 895	20 127	20 395	20 698	21 016	21 384	21 779	22 065	22 324	22 684	25 288	33 959
Austria	8 082	8 121	8 172	8 228	8 269	8 301	8 337	8 365	8 390	8 406	8 430	8 724	9 360
Belgium	10 333	10 376	10 421	10 479	10 548	10 626	10 710	10 796	10 920	11 048	11 128	11 758	13 139
Canada	31 354	31 640	31 941	32 245	32 576	32 928	33 318	33 727	34 127	34 484	34 880	38 025	48 606
Chile	15 746	15 919	16 093	16 267	16 433	16 598	16 763	16 929	17 094	17 248	17 403	18 549	20 205
Czech Republic	10 201	10 202	10 207	10 234	10 267	10 323	10 430	10 491	10 517	10 497	10 509	10 797	10 842
Denmark	5 376	5 391	5 405	5 419	5 437	5 461	5 494	5 523	5 548	5 571	5 592	5 582	5 621
Estonia	1 368	1 362	1 356	1 351	1 346	1 342	1 340	1 338	1 337	1 335	1 329	1 328	1 250
Finland	5 201	5 213	5 228	5 246	5 266	5 289	5 313	5 339	5 363	5 388	5 414	5 606	6 084
France	59 894	60 304	60 734	61 182	61 597	61 965	62 300	62 615	62 918	63 224	63 519	66 098	72 341
Germany	82 488	82 534	82 516	82 469	82 376	82 266	82 110	81 902	81 777	81 798	81 932	79 914	69 412
Greece	10 988	11 024	11 062	11 104	11 148	11 193	11 237	11 283	11 214	11 123	11 093	11 426	10 605
Hungary	10 159	10 130	10 107	10 087	10 071	10 056	10 038	10 023	10 000	9 959	9 920	9 856	8 718
Iceland	288	289	293	296	304	311	319	319	318	319	320	345	420
Ireland	3 932	3 997	4 070	4 160	4 274	4 399	4 454	4 459	4 519	4 577	4 587	4 774	5 482
Israel	6 570	6 690	6 809	6 930	7 054	7 180	7 309	7 486	7 624	7 754	7 886	8 983	13 824
Italy	57 157	57 605	58 175	58 607	59 842	59 375	59 832	60 193	60 483	60 010	59 540	59 001	55 710
Japan	127 435	127 619	127 687	127 768	127 770	127 771	127 692	127 510	128 057	127 799	127 515	124 100	97 076
Korea	47 622	47 859	48 039	48 138	48 372	48 598	48 949	49 182	49 410	49 779	50 004	51 436	48 121
Luxembourg	446	452	458	465	473	480	489	498	507	518	531	523	644
Mexico	103 418	104 720	105 952	107 151	108 409	109 787	111 299	112 853	114 256	115 683	117 054	127 092	150 838
Netherlands	16 149	16 225	16 282	16 320	16 346	16 382	16 446	16 530	16 615	16 693	16 755	17 240	17 343
New Zealand	3 949	4 027	4 088	4 134	4 185	4 228	4 269	4 316	4 368	4 405	4 433	4 565	5 046
Norway	4 538	4 565	4 592	4 623	4 661	4 709	4 768	4 829	4 889	4 953	5 019	5 061	5 854
Poland	38 232	38 195	38 180	38 161	38 132	38 116	38 116	38 153	38 517	38 526	38 534	37 830	34 543
Portugal	10 420	10 459	10 484	10 503	10 522	10 543	10 558	10 568	10 573	10 558	10 515	10 832	10 674
Slovak Republic	5 377	5 373	5 372	5 373	5 373	5 375	5 379	5 386	5 391	5 398	5 408	5 417	4 880
Slovenia	1 995	1 996	1 997	2 000	2 007	2 010	2 021	2 040	2 049	2 053	2 057	2 142	2 115
Spain	41 314	42 005	42 692	43 398	44 116	44 879	45 556	46 071	46 071	46 175	46 147	45 249	41 768
Sweden	8 925	8 958	8 994	9 030	9 081	9 148	9 220	9 299	9 378	9 449	9 519	10 168	11 269
Switzerland	7 285	7 339	7 390	7 437	7 484	7 551	7 648	7 744	7 828	7 912	7 955	8 379	8 981
Turkey	69 304	70 231	71 151	72 065	71 105	70 138	71 052	72 039	73 142	74 224	75 176	81 699	93 469
United Kingdom	59 323	59 557	59 031	59 408	59 751	60 137	60 540	60 927	61 344	63 285	63 705	66 754	76 959
United States	287 625	290 108	292 805	295 517	298 380	301 231	304 094	306 772	309 326	311 588	313 914	333 896	399 803
EU 28	485 721	487 739	489 917	492 026	494 005	496 045	497 980	499 523	501 079	501 928	502 403	514 913	523 804
OECD	1 172 142	1 180 378	1 187 910	1 196 191	1 202 773	1 209 712	1 218 783	1 227 122	1 235 936	1 244 063	1 250 407	1 298 440	1 394 961
Brazil	176 304	178 741	181 106	183 383	185 564	187 642	189 613	191 481	193 253	194 933	196 526	207 143	215 288
China	1 295 322	1 302 810	1 310 414	1 318 177	1 326 146	1 334 344	1 342 733	1 351 248	1 359 822	1 368 440	1 377 065	1 432 868	1 384 977
India	1 076 706	1 093 787	1 110 626	1 127 144	1 143 289	1 159 095	1 174 662	1 190 138	1 205 625	1 221 156	1 236 687	1 353 305	1 620 051
Indonesia	215 038	218 146	221 294	224 481	227 710	230 973	234 244	237 487	240 677	243 802	246 864	269 414	321 377
Russian Federation	145 306	144 649	144 067	143 519	143 050	142 805	142 742	142 785	142 849	142 961	143 207	143 860	120 896
South Africa	46 188	46 869	47 553	48 235	48 919	49 603	50 267	50 890	51 452	51 949	52 386	55 131	63 405
World	6 280 854	6 357 992	6 435 706	6 514 095	6 593 228	6 673 106	6 753 649	6 834 722	6 916 184	6 997 999	7 080 073	7 716 749	9 550 945

StatLink <http://dx.doi.org/10.1787/888933027190>

World population

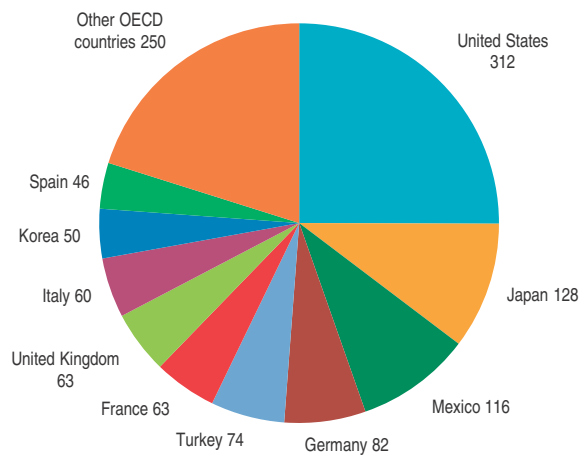
Millions, 2011



StatLink <http://dx.doi.org/10.1787/888933024435>

OECD population

Millions, 2011




StatLink <http://dx.doi.org/10.1787/888933024454>

TOTAL POPULATION

Population growth rates

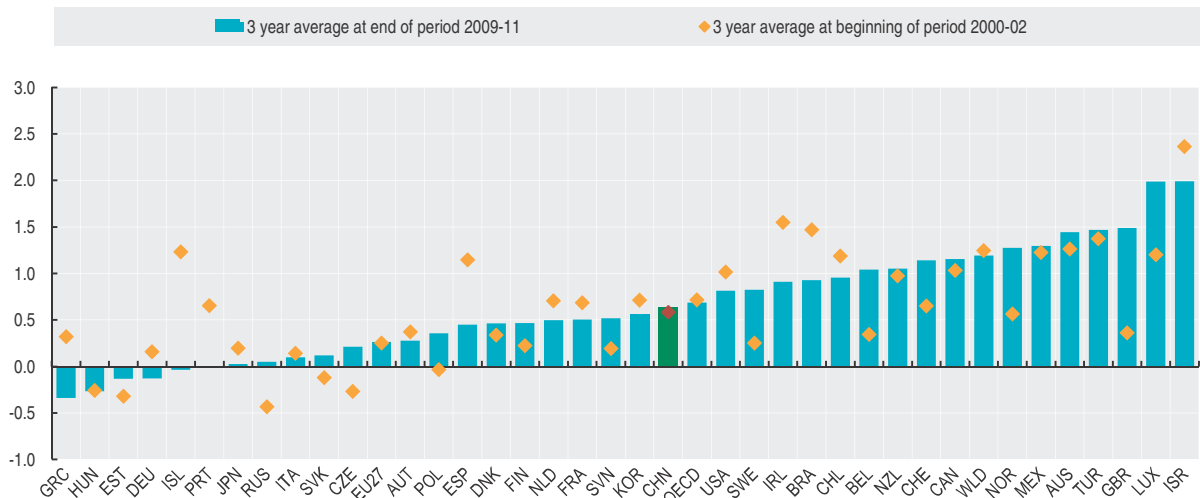
Annual growth in percentage


	2000	2001	2002	2003	2004	2005	2006	2007	2008	2009	2010	2011	2012
Australia	1.20	1.36	1.23	1.24	1.17	1.33	1.49	1.54	1.75	1.85	1.31	1.17	1.61
Austria	0.24	0.38	0.49	0.49	0.62	0.68	0.50	0.39	0.44	0.34	0.29	0.20	0.28
Belgium	0.24	0.34	0.45	0.42	0.43	0.55	0.66	0.74	0.79	0.81	1.15	1.17	0.73
Canada	0.94	1.09	1.08	0.91	0.95	0.95	1.03	1.08	1.18	1.23	1.18	1.05	1.15
Chile	1.32	1.13	1.12	1.10	1.09	1.08	1.02	1.01	1.00	0.99	0.98	0.90	0.89
Czech Republic	-0.10	-0.47	-0.23	0.01	0.05	0.27	0.32	0.55	1.04	0.59	0.25	-0.20	0.12
Denmark	0.33	0.36	0.32	0.27	0.26	0.28	0.33	0.44	0.59	0.54	0.45	0.41	0.38
Estonia	-0.09	-0.42	-0.44	-0.43	-0.40	-0.36	-0.38	-0.28	-0.15	-0.13	-0.12	-0.15	-0.42
Finland	0.21	0.23	0.24	0.24	0.29	0.34	0.38	0.43	0.47	0.48	0.46	0.46	0.48
France	0.66	0.70	0.70	0.68	0.71	0.74	0.68	0.60	0.54	0.51	0.50	0.51	0.49
Germany	0.14	0.17	0.17	0.06	-0.02	-0.06	-0.11	-0.13	-0.19	-0.25	-0.15	0.03	0.16
Greece	0.32	0.30	0.34	0.33	0.35	0.38	0.40	0.40	0.40	0.41	-0.61	-0.81	-0.27
Hungary	-0.26	-0.23	-0.28	-0.29	-0.22	-0.20	-0.16	-0.15	-0.17	-0.15	-0.23	-0.41	-0.39
Iceland	1.43	1.39	0.88	0.60	1.15	1.12	2.86	2.32	2.56	-0.03	-0.39	0.32	..
Ireland	1.34	1.60	1.70	1.64	1.85	2.20	2.75	2.92	1.25	0.11	1.36	1.27	0.22
Israel	2.68	2.38	2.03	1.82	1.78	1.78	1.78	1.79	1.79	2.42	1.84	1.71	..
Italy	0.05	0.06	0.32	0.78	0.99	0.74	0.57	0.74	0.77	0.60	0.48	-0.78	-0.78
Japan	0.19	0.29	0.11	0.14	0.05	0.06	0.00	0.00	-0.06	-0.14	0.43	-0.20	-0.22
Korea	0.84	0.74	0.56	0.50	0.38	0.21	0.49	0.47	0.72	0.48	0.46	0.75	0.45
Luxembourg	1.35	1.20	1.05	1.22	1.43	1.54	1.61	1.56	1.80	1.87	1.84	2.25	2.43
Mexico	1.19	1.22	1.27	1.26	1.18	1.13	1.17	1.27	1.38	1.40	1.24	1.25	1.19
Netherlands	0.72	0.76	0.64	0.47	0.35	0.23	0.16	0.22	0.39	0.52	0.51	0.47	0.37
New Zealand	0.59	0.59	1.75	1.99	1.50	1.14	1.23	1.04	0.96	1.10	1.20	0.85	0.64
Norway	0.65	0.51	0.54	0.59	0.59	0.88	0.81	1.04	1.25	1.27	1.25	1.30	1.33
Poland	-0.04	-0.01	-0.05	-0.10	-0.04	-0.05	-0.08	-0.04	0.00	0.10	0.95	0.02	0.02
Portugal	0.71	0.71	0.55	0.38	0.24	0.19	0.18	0.20	0.14	0.10	0.05	-0.15	-0.40
Slovak Republic	-0.14	-0.18	-0.04	-0.07	-0.02	0.01	0.00	0.03	0.09	0.13	0.09	0.13	0.17
Slovenia	0.30	0.16	0.12	0.06	0.06	0.17	0.32	0.17	0.55	0.91	0.44	0.21	0.21
Spain	0.84	1.14	1.46	1.67	1.64	1.65	1.66	1.73	1.51	0.77	0.35	0.22	-0.06
Sweden	0.16	0.27	0.33	0.37	0.39	0.40	0.56	0.74	0.78	0.86	0.86	0.76	0.74
Switzerland	0.56	0.59	0.80	0.74	0.69	0.64	0.63	0.90	1.28	1.26	1.08	1.08	..
Turkey	1.40	1.37	1.34	1.31	1.27	1.24	1.21	1.18	1.19	1.39	1.53	1.48	1.28
United Kingdom	0.34	0.39	0.36	0.39	-0.88	0.64	0.58	0.65	0.67	0.64	0.68	3.16	0.66
United States	1.12	0.99	0.93	0.86	0.93	0.93	0.97	0.96	0.95	0.88	0.83	0.73	0.75
EU 28	0.23	0.24	0.29	0.42	0.45	0.43	0.40	0.41	0.39	0.31	0.31	0.17	0.09
OECD	0.73	0.72	0.70	0.70	0.64	0.70	0.55	0.58	0.75	0.68	0.72	0.66	..
Brazil	1.50	1.48	1.44	1.38	1.32	1.26	1.19	1.12	1.05	0.99	0.93	0.87	0.82
China	0.59	0.58	0.58	0.58	0.58	0.59	0.60	0.62	0.63	0.63	0.63	0.63	0.63
India	1.68	1.65	1.62	1.59	1.54	1.49	1.43	1.38	1.34	1.32	1.30	1.29	1.27
Indonesia	1.45	1.45	1.45	1.45	1.44	1.44	1.44	1.43	1.42	1.38	1.34	1.30	1.26
Russian Federation	-0.42	-0.42	-0.46	-0.45	-0.40	-0.38	-0.33	-0.17	-0.04	0.03	0.04	0.08	0.17
South Africa	1.47	1.49	1.48	1.47	1.46	1.43	1.42	1.40	1.34	1.24	1.11	0.97	0.84
World	1.26	1.25	1.24	1.23	1.22	1.22	1.21	1.21	1.21	1.20	1.19	1.18	1.17

StatLink  <http://dx.doi.org/10.1787/888933027209>

Population growth rates

Average annual growth in percentage



StatLink  <http://dx.doi.org/10.1787/888933024473>



## TOTAL POPULATION

## Working age population

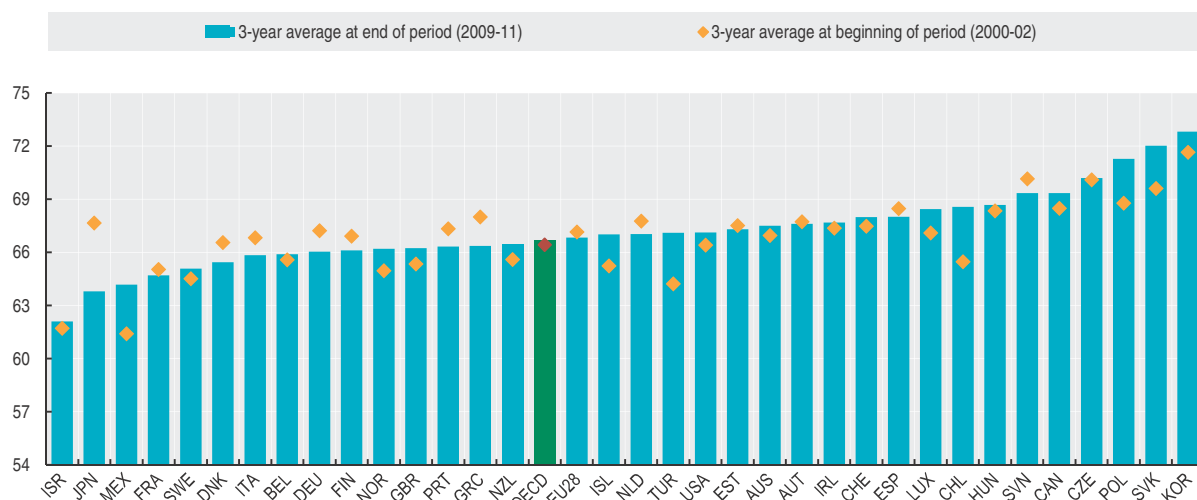
As a percentage of total population

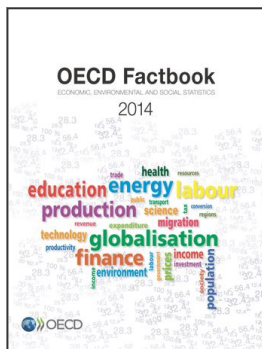
	2000	2001	2002	2003	2004	2005	2006	2007	2008	2009	2010	2011	2012
Australia	66.9	66.9	67.0	67.2	67.3	67.3	67.4	67.5	67.6	67.6	67.5	67.3	67.0
Austria	67.5	67.7	67.9	68.1	68.1	67.8	67.6	67.5	67.5	67.5	67.6	67.7	67.6
Belgium	65.6	65.6	65.6	65.6	65.6	65.6	65.8	66.0	66.1	66.0	65.9	65.8	65.5
Canada	68.3	68.5	68.7	68.8	69.0	69.2	69.4	69.5	69.5	69.4	69.4	69.2	..
Chile	65.0	65.5	65.9	66.3	66.7	67.1	67.5	67.8	68.1	68.4	68.7	68.7	68.7
Czech Republic	69.8	70.1	70.4	70.7	70.9	71.1	71.2	71.2	71.1	70.8	70.3	69.5	68.7
Denmark	66.7	66.5	66.4	66.3	66.2	66.1	66.1	66.0	65.9	65.7	65.5	65.1	..
Estonia	67.3	67.5	67.7	67.9	68.0	68.1	68.0	67.8	67.7	67.6	67.3	67.0	66.5
Finland	66.9	66.9	66.9	66.8	66.7	66.7	66.6	66.5	66.6	66.5	66.2	65.7	65.1
France	65.1	65.0	65.0	65.0	65.1	65.1	65.1	65.1	65.0	64.9	64.7	64.5	64.1
Germany	67.5	67.2	67.0	66.7	66.4	66.9	66.6	66.3	66.2	66.1	66.0	66.1	..
Greece	68.0	68.0	67.9	67.8	67.6	67.3	67.1	67.1	67.0	66.8	66.4	65.9	65.4
Hungary	68.2	68.3	68.5	68.6	68.7	68.8	68.8	68.8	68.8	68.7	68.7	68.7	..
Iceland	65.1	65.3	65.3	65.5	65.8	66.2	66.9	67.4	67.8	67.4	66.9	66.7	66.5
Ireland	67.0	67.3	67.8	67.9	68.0	68.3	68.7	69.0	68.8	68.3	67.7	67.0	..
Israel	61.6	61.7	61.8	61.7	61.7	61.7	61.8	61.8	61.9	62.3	62.2	61.8	..
Italy	67.2	66.8	66.6	66.8	67.2	66.8	66.6	66.5	66.4	66.3	66.2	65.1	..
Japan	68.1	67.7	67.3	66.9	66.6	66.1	65.5	65.0	64.5	63.9	63.8	63.6	62.9
Korea	71.7	71.6	71.6	71.6	71.7	71.7	71.9	72.1	72.3	72.6	72.8	73.0	73.1
Luxembourg	67.0	67.2	67.1	67.2	67.3	67.4	67.6	67.7	68.0	68.2	68.4	68.7	..
Mexico	61.1	61.4	61.7	62.0	62.2	62.5	62.8	63.2	63.5	63.9	64.2	64.5	64.8
Netherlands	67.8	67.8	67.7	67.7	67.6	67.5	67.4	67.4	67.3	67.2	67.0	66.9	66.3
New Zealand	65.5	65.5	65.8	66.1	66.3	66.4	66.5	66.5	66.6	66.5	66.5	66.4	66.1
Norway	64.8	65.0	65.1	65.3	65.5	65.6	65.9	66.1	66.3	66.3	66.2	66.1	66.0
Poland	68.3	68.8	69.2	69.6	70.0	70.3	70.6	70.9	71.2	71.3	71.3	71.2	..
Portugal	67.4	67.3	67.2	67.1	66.9	66.8	66.7	66.7	66.6	66.5	66.3	66.1	65.9
Slovak Republic	69.1	69.6	70.1	70.6	71.0	71.4	71.6	71.9	72.1	72.1	72.0	71.9	71.7
Slovenia	70.1	70.1	70.2	70.4	70.4	70.3	70.2	70.1	69.7	69.5	69.3	69.1	68.7
Spain	68.4	68.5	68.5	68.6	68.7	68.8	68.8	68.8	68.7	68.4	68.0	67.6	..
Sweden	64.3	64.5	64.7	64.9	65.1	65.3	65.5	65.7	65.6	65.4	65.1	64.7	64.2
Switzerland	67.3	67.5	67.6	67.7	67.9	68.0	68.0	68.1	68.1	68.1	68.0	67.9	..
Turkey	63.8	64.2	64.6	65.1	65.4	65.7	66.0	66.2	66.7	66.9	67.1	67.3	..
United Kingdom	65.2	65.4	65.5	65.7	66.1	66.3	66.6	66.7	66.3	66.5	66.4	65.9	65.4
United States	66.2	66.4	66.6	66.7	66.9	67.1	67.3	67.3	67.2	67.2	67.1	67.1	66.8
EU 28	67.1	67.2	67.2	67.2	67.2	67.2	67.2	67.2	67.1	67.0	66.9	66.7	66.4
OECD	66.4	66.4	66.5	66.6	66.7	66.8	66.8	66.8	66.8	66.7	66.7	66.6	..
Brazil	64.8	65.1	65.4	65.7	66.0	66.3	66.5	66.7	67.0	67.3	67.6	67.9	68.2
China	67.5	68.2	69.1	70.1	71.0	71.8	72.4	72.9	73.2	73.4	73.5	73.5	73.3
India	61.4	61.7	62.0	62.3	62.7	63.1	63.4	63.7	64.1	64.4	64.8	65.1	65.4
Indonesia	64.7	64.9	65.0	65.1	65.1	65.1	65.3	65.3	65.2	65.2	65.2	65.3	65.6
Russian Federation	69.6	70.1	70.6	70.8	70.8	70.9	71.0	71.2	71.5	71.8	72.0	71.9	71.4
South Africa	63.6	63.9	64.1	64.4	64.6	64.8	64.9	64.9	65.0	65.0	65.1	65.0	65.0

StatLink <http://dx.doi.org/10.1787/888933027228>

## Working age population

As a percentage of total population

StatLink <http://dx.doi.org/10.1787/888933024492>



**From:**  
**OECD Factbook 2014**  
Economic, Environmental and Social Statistics

**Access the complete publication at:**  
<https://doi.org/10.1787/factbook-2014-en>

**Please cite this chapter as:**

OECD (2014), "Total population", in *OECD Factbook 2014: Economic, Environmental and Social Statistics*, OECD Publishing, Paris.

DOI: <https://doi.org/10.1787/factbook-2014-1-en>

This document, as well as any data and map included herein, are without prejudice to the status of or sovereignty over any territory, to the delimitation of international frontiers and boundaries and to the name of any territory, city or area. Extracts from publications may be subject to additional disclaimers, which are set out in the complete version of the publication, available at the link provided.

The use of this work, whether digital or print, is governed by the Terms and Conditions to be found at <http://www.oecd.org/termsandconditions>.