

RENEWABLE ENERGY

More and more governments are recognising the importance of promoting sustainable development and combating climate change when setting out their energy policies. Higher energy use has contributed to higher greenhouse gas emissions and higher concentration of these gases in the atmosphere. One way to reduce greenhouse gas emissions is to replace energy from fossil fuels by energy from renewables.

Definition

The table refers to the contribution of renewables to total primary energy supply (TPES) in OECD countries. Renewables include the primary energy equivalent of hydro (excluding pumped storage), geothermal, solar, wind, tide and wave. It also includes energy derived from solid biomass, biogasoline, biodiesel, other liquid biofuels, biogas, industrial waste and municipal waste. Biomass is defined as any plant matter used directly as fuel or converted into fuels (e.g. charcoal) or electricity and/or heat. Included here are wood, vegetal waste (including wood waste and crops used for energy production), ethanol, animal materials/wastes and sulphite lyes. Municipal waste comprises wastes produced by the residential, commercial and public service sectors that are collected by local

authorities for disposal in a central location for the production of heat and/or power. The forecasts provided in the table refer to the Reference Scenario of the *World Energy Outlook*.

Comparability

Biomass and waste data are often based on small sample surveys or other incomplete information. Thus, the data give only a broad impression of developments and are not strictly comparable between countries. In some cases, complete categories of vegetal fuel are omitted due to lack of information.

Overview

In OECD countries, total renewables supply grew by 2.4% per annum between 1971 and 2008 as compared to 1.3% per annum for total primary energy supply. Annual growth for hydro (1.1%) was lower than for other renewables such as geothermal (5.6%) and combustible renewables and waste (2.8%). Due to a very low base in 1971, solar and wind experienced the most rapid growth in OECD member countries, especially where government policies have stimulated expansion of these energy sources.

For the OECD as a whole, the contribution of renewables to energy supply increased from 4.8% in 1971 to 7.1% in 2008. The contribution of renewables varied greatly by country. On the high end, renewables represented 82% of energy supply in Iceland and 43% in Norway. On the low end, renewables contributed 3% or less of the energy supply for Japan, Korea, Luxembourg and the United Kingdom.

In general, the contribution of renewables to the energy supply in non-OECD countries is higher than in OECD countries. In 2007, renewables contributed 44% to the energy supply of Brazil, 31% in Indonesia, 29% in India, 12% in China, 10% in South Africa and 3% in the Russian Federation.

Sources

- IEA (2009), *Energy Balances of Non-OECD Countries*, IEA, Paris.
- IEA (2009), *Energy Balances of OECD Countries*, IEA, Paris.
- IEA (2009), *World Energy Outlook 2009*, IEA, Paris.

Further information

Analytical publications

- IEA (2007), *Renewables for Heating and Cooling*, IEA, Paris.
- IEA (2008), *Deploying Renewables: Principles for Effective Policies*, IEA, Paris.
- IEA (2008), *Energy Technology Perspectives: Scenarios and Strategies to 2050*, IEA, Paris.
- IEA (2009), *IEA Scoreboard 2009: 35 Key Energy Trends over 35 Years*, IEA, Paris.
- IEA (2009), *Transport Energy and CO₂: Moving towards Sustainability*, IEA, Paris.
- OECD (2008), *Biofuel Support Policies: An Economic Assessment*, OECD, Paris.

Statistical publications

- IEA (2009), *Renewables Information 2009*, IEA, Paris.

Online databases

- *World Energy Statistics and Balances*.

Web sites

- International Energy Agency, www.iea.org.

Contribution of renewables to energy supply

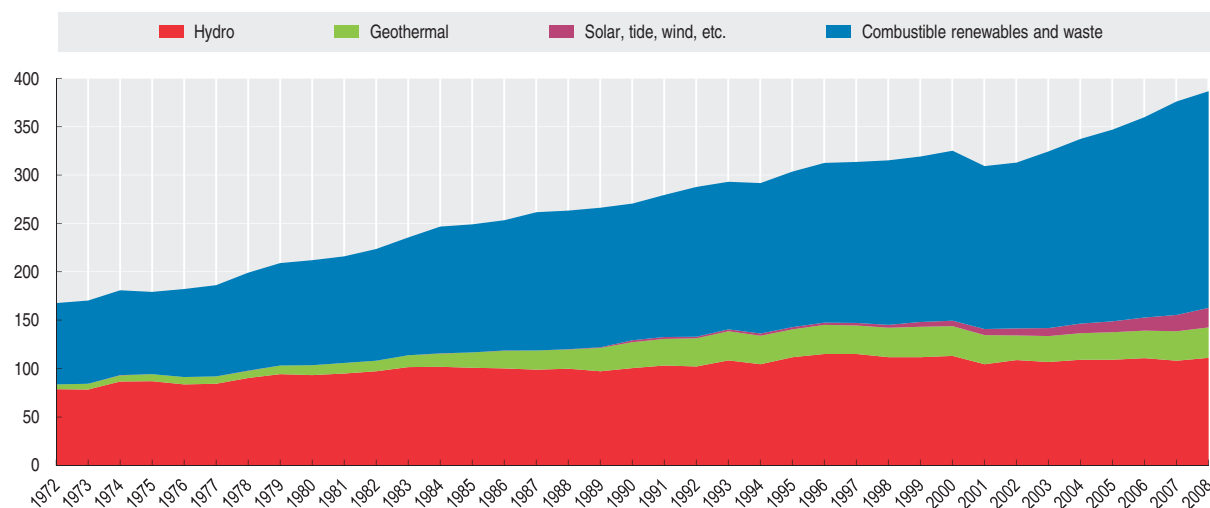

As a percentage of total primary energy supply

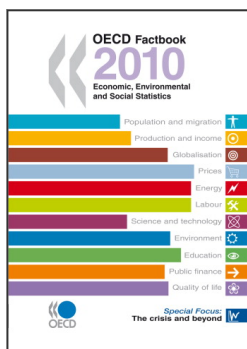
	1971	1990	1998	1999	2000	2001	2002	2003	2004	2005	2006	2007	2008	2030
Australia	8.8	6.1	6.1	6.1	6.0	6.2	6.2	6.0	6.0	5.5	5.3	5.6	5.3	..
Austria	10.9	21.0	21.6	23.9	24.0	23.3	23.3	20.9	22.2	22.4	23.9	25.6	25.8	..
Belgium	..	1.6	1.7	1.8	1.8	2.1	2.1	2.4	2.6	2.8	3.4	3.8	4.4	..
Canada	15.3	16.2	16.5	16.9	16.9	16.0	16.9	15.7	15.6	16.1	15.8	16.2	16.5	..
Czech Republic	0.2	0.2	1.7	2.4	2.0	2.1	2.5	3.7	4.1	4.3	4.6	5.0	5.1	..
Denmark	1.8	6.9	9.1	10.1	11.4	12.0	12.9	13.9	15.7	17.1	16.3	18.1	18.5	..
Finland	27.3	19.3	22.8	22.8	24.8	23.3	22.9	21.9	23.6	23.7	23.3	23.5	25.2	..
France	8.6	7.3	7.1	7.5	7.2	7.1	6.5	6.6	6.6	6.4	6.7	7.2	7.5	..
Germany	1.2	1.8	2.8	2.8	3.2	3.5	3.8	4.3	4.9	5.2	6.1	8.6	8.4	..
Greece	7.8	5.1	5.4	5.8	5.4	4.9	5.0	5.4	5.4	5.5	5.9	5.4	5.1	..
Hungary	2.9	2.7	3.4	3.5	3.5	3.6	3.6	3.5	3.7	4.5	4.8	5.4	6.1	..
Iceland	46.7	67.0	70.2	74.0	74.5	75.6	75.0	75.2	74.5	75.6	78.4	80.8	82.4	..
Ireland	0.6	1.7	1.8	1.7	1.7	1.6	1.8	1.6	2.0	2.5	2.9	3.1	3.7	..
Italy	5.6	4.5	5.6	6.0	6.1	6.2	6.0	6.3	7.1	6.7	7.3	7.2	8.2	..
Japan	2.7	3.5	3.5	3.4	3.3	3.3	3.3	3.6	3.5	3.3	3.5	3.4	3.2	6.8
Korea	0.6	1.4	0.9	0.9	0.9	1.0	0.9	1.1	1.1	1.2	1.3	1.4	1.5	..
Luxembourg	..	0.9	1.7	1.6	1.5	1.7	1.4	1.6	1.7	1.9	1.9	2.8	2.4	..
Mexico	16.8	11.4	10.6	10.7	10.8	10.3	9.6	9.6	9.8	9.7	9.5	9.3	9.6	..
Netherlands	..	1.5	2.3	2.4	2.5	2.6	2.8	2.7	3.0	3.6	3.8	3.9	4.5	..
New Zealand	32.0	35.8	32.0	32.2	29.8	27.8	29.7	29.7	31.6	32.1	31.7	32.6	33.9	..
Norway	40.9	54.5	44.7	45.5	52.5	45.0	50.9	38.8	38.2	46.1	40.1	48.3	43.4	..
Poland	1.6	2.3	4.6	4.5	4.8	5.1	5.2	5.1	5.3	5.4	5.7	5.7	6.0	..
Portugal	19.6	19.6	16.3	13.7	15.6	16.5	14.1	17.3	15.1	13.6	17.6	18.3	18.2	..
Slovak Republic	2.4	1.5	4.0	4.4	4.6	4.4	4.2	3.6	4.2	4.6	4.7	5.7	5.1	..
Spain	6.5	6.9	6.3	5.4	5.8	6.7	5.5	7.0	6.5	6.0	6.6	7.1	7.5	..
Sweden	20.4	24.9	27.9	27.2	31.7	28.8	26.0	25.3	25.8	29.7	29.7	31.1	32.6	..
Switzerland	15.5	14.9	17.0	19.1	18.6	19.3	17.6	18.0	18.4	18.5	18.0	20.7	20.4	..
Turkey	31.0	18.3	16.0	15.2	13.2	13.3	13.5	12.9	13.3	12.0	11.2	9.6	9.5	..
United Kingdom	0.1	0.5	1.0	1.0	1.1	1.3	1.5	1.6	1.7	2.0	2.1	2.4	2.8	..
United States	3.7	5.2	5.1	5.0	4.8	4.3	4.3	4.6	4.6	4.8	5.0	5.0	5.3	10.9
EU27 total	..	4.5	5.9	5.9	6.2	6.2	6.1	6.4	6.8	6.9	7.4	8.2	..	17.0
OECD total	4.8	6.0	6.2	6.2	6.2	5.9	5.9	6.1	6.2	6.3	6.6	6.9	7.1	12.9
Brazil	56.4	46.9	40.3	40.1	39.0	37.5	39.3	42.0	42.3	42.9	43.3	44.4
Chile	20.8	25.0	23.2	20.5	22.6	23.9	23.8	22.7	21.4	22.5	23.0	21.8
China	40.0	24.5	20.4	20.4	20.3	20.7	19.1	16.7	14.7	13.8	12.8	12.3	..	8.9
Estonia	..	2.0	10.3	11.3	11.3	11.5	12.2	11.7	11.7	11.2	10.6	10.7
India	62.9	43.9	35.8	34.3	34.0	33.9	33.3	33.0	31.8	31.4	30.4	29.2	..	17.2
Indonesia	76.0	45.4	35.2	36.5	36.4	35.9	35.4	34.9	33.7	33.0	32.6	31.2
Israel	..	3.1	3.2	3.2	3.3	3.3	3.5	3.5	3.7	3.6	3.5	3.5
Russian Federation	..	3.0	3.4	3.6	3.5	3.5	3.4	3.1	3.5	3.4	3.4	3.3	..	4.7
Slovenia	..	9.2	8.7	8.6	12.3	11.6	10.4	10.4	11.6	10.8	10.7	10.4
South Africa	10.4	11.6	11.3	11.4	11.5	12.0	12.7	11.3	10.4	10.7	10.7	10.3
World	13.2	12.8	13.2	13.2	13.1	13.0	12.9	12.8	12.6	12.6	12.6	12.6	..	14.1

StatLink  <http://dx.doi.org/10.1787/825324676083>

OECD renewable energy supply

Million tonnes of oil equivalent (Mtoe)

StatLink  <http://dx.doi.org/10.1787/820212576811>



From:
OECD Factbook 2010
Economic, Environmental and Social Statistics

Access the complete publication at:
<https://doi.org/10.1787/factbook-2010-en>

Please cite this chapter as:

OECD (2010), "Renewable Energy", in *OECD Factbook 2010: Economic, Environmental and Social Statistics*, OECD Publishing, Paris.

DOI: <https://doi.org/10.1787/factbook-2010-41-en>

This work is published under the responsibility of the Secretary-General of the OECD. The opinions expressed and arguments employed herein do not necessarily reflect the official views of OECD member countries.

This document and any map included herein are without prejudice to the status of or sovereignty over any territory, to the delimitation of international frontiers and boundaries and to the name of any territory, city or area.

You can copy, download or print OECD content for your own use, and you can include excerpts from OECD publications, databases and multimedia products in your own documents, presentations, blogs, websites and teaching materials, provided that suitable acknowledgment of OECD as source and copyright owner is given. All requests for public or commercial use and translation rights should be submitted to rights@oecd.org. Requests for permission to photocopy portions of this material for public or commercial use shall be addressed directly to the Copyright Clearance Center (CCC) at info@copyright.com or the Centre français d'exploitation du droit de copie (CFC) at contact@cfcopies.com.