

EMPLOYMENT RATES

Employment rates are a measure of the extent of utilisation of available labour resources. In the short term, these rates are sensitive to the economic cycle, but in the longer term they are significantly affected by government policies with regard to higher education and income support and by policies that facilitate employment of women.

Definition

Employment rates are calculated as the ratio of the employed to the working age population. Employment is generally measured through household labour force surveys. According to the ILO Guidelines, employed persons are defined as those aged 15 or over who report that they have worked in gainful employment for at least one hour in the previous week. Those not in employment consist of persons who are classified as either unemployed or inactive, in the sense that they are not included in the labour force for reasons of study, incapacity or the need to look after young children or elderly relatives.

Overview

Total employment rates over the three years to 2008 are, in most OECD countries, slightly above the levels achieved in the period 1995 to 1997. In Ireland and Spain the increase in employment rates exceed 10 points, while gains are more moderate for most other OECD countries. However, the Czech Republic, Poland, the Slovak Republic, Turkey and the United States recorded modest falls in employment rates over this period. By the end of the period, employment rates ranged between 45% in Turkey and 85% in Iceland. Among the non-OECD countries shown here, employment rates in Brazil, Estonia and Russia are slightly above OECD average, rising by 5 percentage points over the past years in Russia and Slovenia. By contrast, employment rates in Chile and Israel are below the OECD average, despite modest rises since the mid-1990s. All these developments have preceded those associated to the financial crisis of 2008-2009, whose employment impacts are described later in this volume.

Employment rates for men are higher than those for women in all OECD countries. While employment rates for men have remained fairly stable in most OECD countries, there are larger differences across countries in how those for women have evolved. In particular, in Italy, Luxembourg, Spain, Ireland and the Netherlands employment rates for women have increased by more than 10 percentage points in this period, contributing to much of the rise in the total employment. In non-OECD countries, employment rates of men are markedly higher than those of women, by more than 20 points in Brazil and Chile and by 5 to 10 points in Estonia, Israel, Russia and Slovenia. Brazil, Chile and Israel have below OECD-average employment rates for women despite increases since the mid-1990s in excess of those recorded for men. By contrast, Estonia, Russia and Slovenia have above OECD-average employment rates for women, rising at a somewhat quicker pace than those of men since the mid-1990s.

The working age population refers to persons aged 15 to 64. Employment rates are here shown for both total employment and for men and women separately.

Comparability

All OECD countries use the ILO Guidelines for measuring employment. Operational definitions used in national labour force surveys may vary slightly from country to country. Employment levels are also likely to be affected by changes in the survey design and the survey conduct. Despite these changes, the employment rates shown here are fairly consistent over time.

Sources

- OECD (2009), *OECD Employment Outlook*, OECD, Paris.

Further information

Analytical publications

- Jeaumotte, F. (2003), *Female Labour Force Participation*, OECD Economics Department Working Papers, No. 376, OECD, Paris.
- OECD (2002-2008), *Babies and Bosses – Reconciling Work and Family Life*, series, OECD, Paris.

Statistical publications

- OECD (2004), *Quarterly Labour Force Statistics*, OECD, Paris.
- OECD (2009), *Labour Force Statistics*, OECD, Paris.

Online databases

- *Employment Statistics*.

Web sites

- OECD Labour Statistics Database, www.oecd.org/statistics/labour.
- Putting More Women to Work: A Colloquium on Employment, Child Care and Taxes, www.oecd.org/employment/colloquium/women.

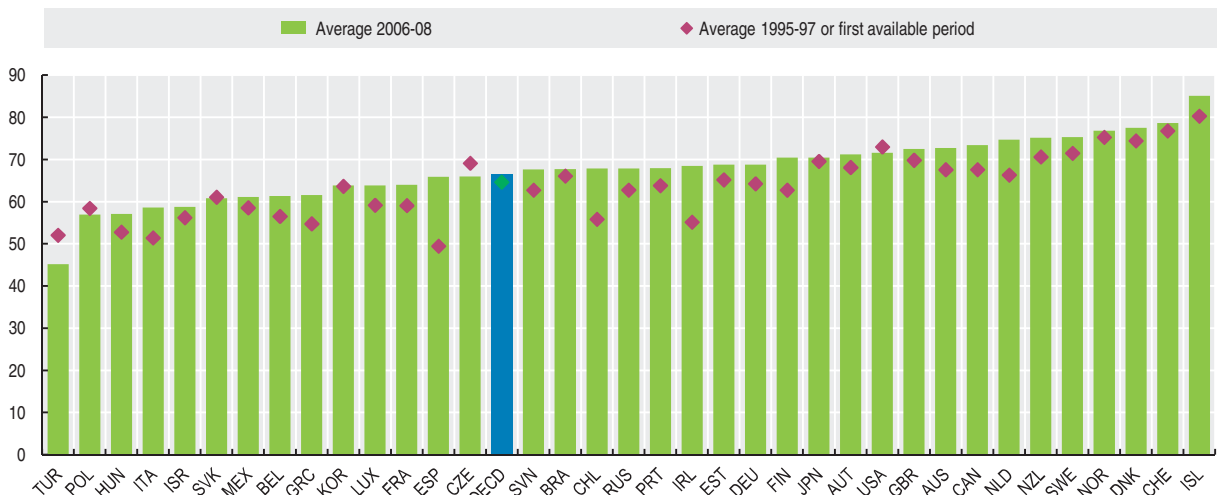


Employment rates: total
Share of persons of working age in employment

| | 1995 | 1996 | 1997 | 1998 | 1999 | 2000 | 2001 | 2002 | 2003 | 2004 | 2005 | 2006 | 2007 | 2008 |
|--------------------|------|------|------|------|------|------|------|------|------|------|------|------|------|------|
| Australia | 67.7 | 67.6 | 67.4 | 67.9 | 68.4 | 69.3 | 69.0 | 69.4 | 70.0 | 70.3 | 71.5 | 72.2 | 72.8 | 73.2 |
| Austria | 68.7 | 67.8 | 67.8 | 67.8 | 68.4 | 68.3 | 68.2 | 68.8 | 68.9 | 67.8 | 68.6 | 70.2 | 71.4 | 72.1 |
| Belgium | 56.3 | 56.3 | 57.0 | 57.3 | 58.9 | 60.9 | 59.7 | 59.7 | 59.3 | 60.5 | 61.0 | 60.4 | 61.6 | 62.0 |
| Canada | 67.5 | 67.3 | 68.0 | 68.9 | 70.0 | 70.9 | 70.8 | 71.4 | 72.2 | 72.5 | 72.5 | 72.9 | 73.6 | 73.7 |
| Czech Republic | 69.4 | 69.3 | 68.7 | 67.5 | 65.9 | 65.2 | 65.3 | 65.7 | 64.9 | 64.2 | 64.8 | 65.3 | 66.1 | 66.6 |
| Denmark | 73.9 | 74.0 | 75.4 | 75.3 | 76.5 | 76.4 | 75.9 | 76.4 | 75.1 | 76.0 | 75.5 | 76.9 | 77.3 | 78.4 |
| Finland | 61.9 | 62.8 | 63.5 | 64.8 | 66.6 | 67.5 | 68.3 | 68.3 | 67.9 | 67.8 | 68.5 | 69.6 | 70.5 | 71.3 |
| France | 59.1 | 59.2 | 58.9 | 59.4 | 59.8 | 61.1 | 62.0 | 62.2 | 63.3 | 63.1 | 63.2 | 63.3 | 64.0 | 64.6 |
| Germany | 64.6 | 64.3 | 63.8 | 64.7 | 65.2 | 65.6 | 65.8 | 65.3 | 64.6 | 65.0 | 65.5 | 67.2 | 69.0 | 70.2 |
| Greece | 54.5 | 54.9 | 54.8 | 55.6 | 55.4 | 55.9 | 55.6 | 57.7 | 58.9 | 59.6 | 60.3 | 61.0 | 61.5 | 62.2 |
| Hungary | 52.9 | 52.7 | 52.7 | 53.6 | 55.4 | 56.0 | 56.2 | 56.2 | 57.0 | 56.8 | 56.9 | 57.3 | 57.3 | 56.7 |
| Iceland | 80.5 | 80.4 | 80.0 | 82.2 | 84.2 | 84.6 | 84.6 | 82.8 | 84.1 | 82.8 | 84.4 | 85.3 | 85.7 | 84.2 |
| Ireland | 54.1 | 55.0 | 56.3 | 59.6 | 62.5 | 64.5 | 65.0 | 65.0 | 64.9 | 65.4 | 67.1 | 68.2 | 69.0 | 68.1 |
| Italy | 51.2 | 51.4 | 51.6 | 52.2 | 52.9 | 53.9 | 54.9 | 55.6 | 56.2 | 57.4 | 57.5 | 58.4 | 58.7 | 58.7 |
| Japan | 69.2 | 69.5 | 70.0 | 69.5 | 68.9 | 68.9 | 68.8 | 68.2 | 68.4 | 68.7 | 69.3 | 70.0 | 70.7 | 70.7 |
| Korea | 63.5 | 63.7 | 63.7 | 59.2 | 59.6 | 61.5 | 62.1 | 63.3 | 63.0 | 63.6 | 63.7 | 63.8 | 63.9 | 63.8 |
| Luxembourg | 58.5 | 59.1 | 59.9 | 60.2 | 61.6 | 62.7 | 63.0 | 63.6 | 62.2 | 62.5 | 63.6 | 63.6 | 63.6 | 64.4 |
| Mexico | 57.2 | 58.1 | 60.3 | 60.4 | 60.4 | 60.1 | 59.4 | 59.3 | 58.8 | 59.9 | 59.6 | 61.0 | 61.1 | 61.3 |
| Netherlands | 65.1 | 66.0 | 67.9 | 69.5 | 70.8 | 72.1 | 73.1 | 73.2 | 72.6 | 71.8 | 71.9 | 73.2 | 74.8 | 76.1 |
| New Zealand | 70.1 | 71.1 | 70.6 | 69.6 | 70.1 | 70.7 | 71.8 | 72.4 | 72.5 | 73.5 | 74.6 | 75.2 | 75.4 | 74.9 |
| Norway | 73.5 | 75.3 | 77.0 | 78.3 | 78.0 | 77.9 | 77.5 | 77.1 | 75.8 | 75.6 | 75.2 | 75.5 | 76.9 | 78.1 |
| Poland | 58.1 | 58.4 | 58.8 | 58.9 | 57.5 | 55.0 | 53.5 | 51.7 | 51.4 | 51.9 | 53.0 | 54.5 | 57.0 | 59.2 |
| Portugal | 63.2 | 63.6 | 64.7 | 66.8 | 67.4 | 68.3 | 68.6 | 68.1 | 67.1 | 67.8 | 67.5 | 67.9 | 67.8 | 68.2 |
| Slovak Republic | 60.2 | 61.9 | 61.1 | 60.5 | 58.1 | 56.8 | 56.9 | 56.9 | 57.7 | 57.0 | 57.7 | 59.4 | 60.7 | 62.3 |
| Spain | 48.3 | 49.3 | 50.7 | 52.4 | 55.0 | 57.4 | 58.8 | 59.5 | 60.7 | 62.0 | 64.3 | 65.7 | 66.6 | 65.3 |
| Sweden | 72.2 | 71.6 | 70.7 | 71.5 | 72.9 | 74.2 | 75.2 | 74.9 | 74.3 | 73.5 | 73.9 | 74.5 | 75.7 | 75.7 |
| Switzerland | 76.4 | 77.0 | 76.9 | 78.0 | 78.4 | 78.4 | 79.2 | 78.9 | 77.9 | 77.4 | 77.2 | 77.9 | 78.6 | 79.5 |
| Turkey | 52.4 | 52.5 | 51.3 | 51.4 | 50.8 | 48.9 | 47.8 | 46.7 | 45.5 | 46.1 | 45.9 | 45.9 | 44.6 | 44.9 |
| United Kingdom | 69.2 | 69.7 | 70.6 | 71.0 | 71.5 | 72.2 | 72.5 | 72.3 | 72.6 | 72.7 | 72.6 | 72.5 | 72.3 | 72.7 |
| United States | 72.5 | 72.9 | 73.5 | 73.8 | 73.9 | 74.1 | 73.1 | 71.9 | 71.2 | 71.2 | 71.5 | 72.0 | 71.8 | 70.9 |
| OECD total | 64.2 | 64.5 | 65.0 | 65.1 | 65.3 | 65.6 | 65.4 | 65.1 | 64.9 | 65.2 | 65.5 | 66.2 | 66.6 | 66.7 |
| Brazil | 67.7 | 65.1 | 65.3 | 64.4 | 64.6 | .. | 64.3 | 65.4 | 65.0 | 66.4 | 67.0 | 67.4 | 67.4 | 68.3 |
| Chile | .. | 55.8 | 55.8 | 55.5 | 54.4 | 53.8 | 54.0 | 53.8 | 54.3 | 55.2 | 55.0 | 56.5 | 57.1 | 57.8 |
| Estonia | 65.5 | 64.9 | 65.2 | 64.5 | 61.6 | 60.7 | 61.1 | 61.7 | 62.6 | 62.6 | 64.0 | 67.7 | 69.1 | 69.5 |
| Israel | 56.5 | 56.4 | 55.7 | 55.2 | 55.5 | 56.1 | 55.6 | 54.8 | 55.0 | 55.7 | 56.7 | 57.6 | 58.9 | 59.8 |
| Russian Federation | 64.5 | 63.4 | 60.4 | 58.4 | 61.6 | 63.3 | 63.2 | 64.5 | 64.2 | 65.0 | 66.1 | 66.5 | 68.3 | 68.8 |
| Slovenia | 62.8 | 61.9 | 63.5 | 63.3 | 62.5 | 62.9 | 63.9 | 63.4 | 62.6 | 65.3 | 66.0 | 66.6 | 67.8 | 68.6 |

StatLink <http://dx.doi.org/10.1787/825386018701>

Employment rates: total
Share of persons of working age in employment

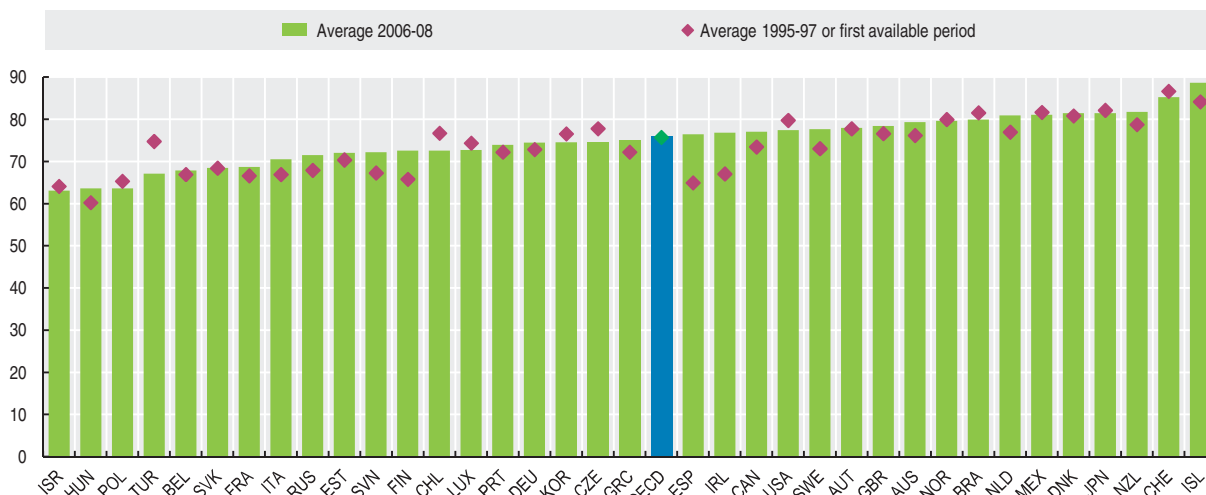


StatLink <http://dx.doi.org/10.1787/820337340873>

EMPLOYMENT RATES

Employment rates: men
 Share of men of working age in employment

| | 1995 | 1996 | 1997 | 1998 | 1999 | 2000 | 2001 | 2002 | 2003 | 2004 | 2005 | 2006 | 2007 | 2008 |
|--------------------|------|------|------|------|------|------|------|------|------|------|------|------|------|------|
| Australia | 76.4 | 76.3 | 75.8 | 76.2 | 76.6 | 77.1 | 76.4 | 76.7 | 77.0 | 77.6 | 78.5 | 78.8 | 79.6 | 79.6 |
| Austria | 78.6 | 77.4 | 77.2 | 77.0 | 77.5 | 77.3 | 76.6 | 76.4 | 76.4 | 74.9 | 75.4 | 76.9 | 78.4 | 78.5 |
| Belgium | 66.9 | 66.8 | 67.1 | 67.0 | 67.5 | 69.8 | 68.5 | 68.1 | 67.1 | 67.9 | 67.7 | 67.0 | 68.2 | 68.3 |
| Canada | 73.4 | 73.2 | 73.8 | 74.3 | 75.4 | 76.2 | 75.7 | 75.9 | 76.4 | 76.7 | 76.7 | 76.8 | 77.2 | 77.2 |
| Czech Republic | 77.9 | 78.1 | 77.4 | 76.3 | 74.3 | 73.6 | 73.6 | 74.2 | 73.4 | 72.4 | 73.3 | 73.7 | 74.8 | 75.4 |
| Denmark | 80.7 | 80.5 | 81.3 | 80.2 | 81.2 | 80.7 | 80.2 | 80.2 | 79.7 | 79.9 | 80.1 | 80.6 | 81.3 | 82.4 |
| Finland | 64.8 | 66.0 | 66.6 | 68.2 | 69.6 | 70.5 | 71.2 | 70.4 | 70.1 | 70.0 | 70.5 | 71.8 | 72.4 | 73.4 |
| France | 66.7 | 66.8 | 66.3 | 66.6 | 66.8 | 68.1 | 69.0 | 68.6 | 69.1 | 68.7 | 68.6 | 68.4 | 68.6 | 69.2 |
| Germany | 73.7 | 72.8 | 72.1 | 72.9 | 72.8 | 72.9 | 72.8 | 71.7 | 70.4 | 70.8 | 71.4 | 72.8 | 74.7 | 75.9 |
| Greece | 72.2 | 72.6 | 71.9 | 71.6 | 70.9 | 71.3 | 70.9 | 72.5 | 73.5 | 74.0 | 74.5 | 74.6 | 74.9 | 75.4 |
| Hungary | 60.2 | 60.2 | 60.3 | 60.3 | 62.2 | 62.7 | 63.0 | 62.9 | 63.4 | 63.1 | 63.1 | 63.8 | 64.0 | 63.0 |
| Iceland | 84.0 | 84.3 | 84.2 | 86.0 | 88.2 | 88.2 | 88.0 | 85.7 | 86.8 | 86.2 | 87.4 | 88.7 | 89.5 | 87.8 |
| Ireland | 66.7 | 66.6 | 67.8 | 71.0 | 73.5 | 75.6 | 76.0 | 74.9 | 74.6 | 75.1 | 76.2 | 77.4 | 77.4 | 75.6 |
| Italy | 67.0 | 66.9 | 66.8 | 67.1 | 67.6 | 68.2 | 68.7 | 69.2 | 69.7 | 69.7 | 69.7 | 70.5 | 70.7 | 70.3 |
| Japan | 81.9 | 82.1 | 82.4 | 81.7 | 81.0 | 80.9 | 80.5 | 79.9 | 79.8 | 80.0 | 80.4 | 81.0 | 81.7 | 81.6 |
| Korea | 76.8 | 76.7 | 76.2 | 71.3 | 71.3 | 73.1 | 73.5 | 74.9 | 75.0 | 75.2 | 75.0 | 74.6 | 74.7 | 74.4 |
| Luxembourg | 74.3 | 74.4 | 74.3 | 74.6 | 74.4 | 75.0 | 74.9 | 75.5 | 73.3 | 72.8 | 73.3 | 72.6 | 72.8 | 72.8 |
| Mexico | 79.9 | 81.4 | 83.7 | 83.5 | 83.7 | 82.8 | 82.3 | 81.6 | 80.8 | 81.0 | 80.2 | 81.6 | 80.9 | 80.7 |
| Netherlands | 76.0 | 76.8 | 78.1 | 79.6 | 80.3 | 81.2 | 81.9 | 81.4 | 80.3 | 79.3 | 78.9 | 79.9 | 81.0 | 81.9 |
| New Zealand | 78.6 | 79.0 | 78.6 | 77.3 | 77.4 | 78.2 | 79.1 | 79.8 | 79.4 | 80.8 | 81.5 | 82.1 | 82.1 | 81.0 |
| Norway | 78.1 | 80.0 | 81.7 | 82.8 | 82.1 | 81.7 | 81.0 | 80.2 | 78.7 | 78.4 | 78.3 | 78.6 | 79.7 | 80.6 |
| Poland | 64.7 | 65.2 | 66.1 | 65.8 | 63.6 | 61.2 | 59.2 | 57.0 | 56.7 | 57.4 | 59.0 | 60.9 | 63.6 | 66.3 |
| Portugal | 72.1 | 72.0 | 72.5 | 75.6 | 75.6 | 76.3 | 76.5 | 75.7 | 73.9 | 74.1 | 73.4 | 73.9 | 73.9 | 74.0 |
| Slovak Republic | 67.6 | 69.2 | 68.4 | 67.8 | 64.3 | 62.2 | 62.1 | 62.5 | 63.4 | 63.2 | 64.6 | 67.0 | 68.4 | 70.0 |
| Spain | 64.0 | 64.7 | 66.1 | 68.3 | 70.8 | 72.7 | 73.8 | 73.9 | 74.5 | 74.9 | 76.4 | 77.3 | 77.4 | 74.6 |
| Sweden | 73.5 | 73.2 | 72.4 | 73.6 | 74.8 | 76.2 | 76.9 | 76.4 | 75.7 | 75.0 | 75.9 | 76.8 | 78.0 | 78.1 |
| Switzerland | 87.3 | 86.8 | 85.9 | 87.2 | 87.1 | 87.3 | 87.6 | 86.2 | 85.1 | 84.5 | 83.9 | 84.7 | 85.6 | 85.4 |
| Turkey | 74.6 | 74.9 | 74.8 | 74.3 | 72.7 | 71.7 | 69.3 | 66.9 | 65.9 | 67.9 | 68.2 | 68.0 | 66.8 | 66.6 |
| United Kingdom | 76.1 | 76.3 | 77.4 | 78.0 | 78.3 | 78.9 | 79.1 | 78.6 | 78.9 | 78.9 | 78.8 | 78.4 | 78.4 | 78.5 |
| United States | 79.5 | 79.7 | 80.1 | 80.5 | 80.5 | 80.6 | 79.4 | 78.0 | 76.9 | 77.2 | 77.6 | 78.1 | 77.8 | 76.4 |
| OECD total | 75.4 | 75.6 | 76.0 | 76.0 | 76.0 | 76.2 | 75.7 | 75.0 | 74.6 | 74.8 | 75.1 | 75.7 | 76.0 | 75.7 |
| Brazil | 83.1 | 80.8 | 80.7 | 79.5 | 78.8 | .. | 78.2 | 78.7 | 77.9 | 79.3 | 79.4 | 79.6 | 79.7 | 80.6 |
| Chile | .. | 76.7 | 76.7 | 74.4 | 73.0 | 72.1 | 72.3 | 71.8 | 71.7 | 71.9 | 71.6 | 72.6 | 72.6 | 72.5 |
| Estonia | 70.9 | 69.8 | 70.4 | 68.9 | 65.6 | 64.8 | 65.2 | 66.0 | 66.7 | 65.7 | 66.2 | 70.5 | 72.6 | 73.0 |
| Israel | 65.0 | 64.2 | 63.1 | 61.9 | 61.3 | 61.4 | 60.8 | 59.5 | 59.4 | 60.4 | 61.0 | 61.8 | 63.3 | 64.1 |
| Russian Federation | 69.9 | 68.6 | 65.3 | 63.1 | 65.9 | 67.6 | 67.4 | 68.3 | 67.9 | 68.6 | 69.6 | 69.7 | 71.8 | 73.0 |
| Slovenia | 67.7 | 66.2 | 67.9 | 67.7 | 66.9 | 67.2 | 68.7 | 68.2 | 67.4 | 70.0 | 70.4 | 71.1 | 72.7 | 72.7 |

 StatLink  <http://dx.doi.org/10.1787/825405675131>
Employment rates: men
 Share of men of working age in employment

 StatLink  <http://dx.doi.org/10.1787/820376622564>

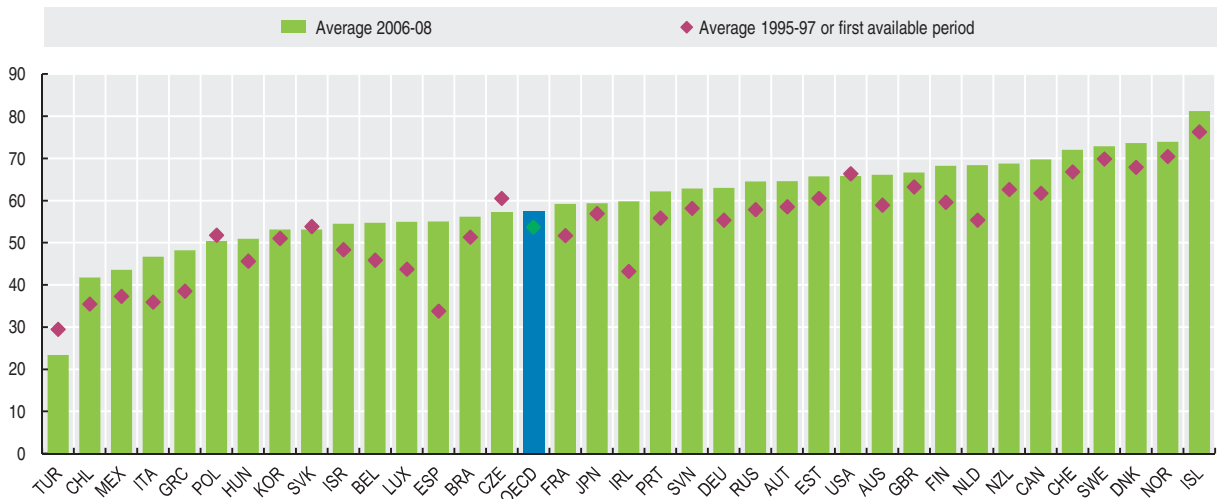


Employment rates: women
Share of women of working age in employment

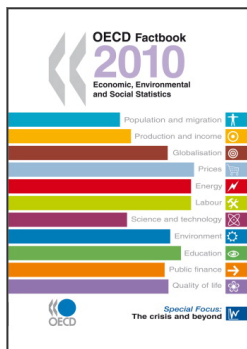
| | 1995 | 1996 | 1997 | 1998 | 1999 | 2000 | 2001 | 2002 | 2003 | 2004 | 2005 | 2006 | 2007 | 2008 |
|--------------------|------|------|------|------|------|------|------|------|------|------|------|------|------|------|
| Australia | 59.0 | 58.9 | 58.9 | 59.6 | 60.0 | 61.4 | 61.7 | 62.0 | 63.0 | 63.0 | 64.6 | 65.5 | 66.1 | 66.7 |
| Austria | 58.9 | 58.3 | 58.4 | 58.5 | 59.4 | 59.4 | 59.9 | 61.2 | 61.6 | 60.7 | 62.0 | 63.5 | 64.4 | 65.8 |
| Belgium | 45.4 | 45.6 | 46.7 | 47.5 | 50.2 | 51.9 | 50.7 | 51.1 | 51.4 | 53.0 | 54.1 | 53.6 | 54.9 | 55.7 |
| Canada | 61.6 | 61.5 | 62.1 | 63.5 | 64.6 | 65.6 | 65.9 | 67.0 | 67.9 | 68.4 | 68.3 | 69.0 | 70.1 | 70.1 |
| Czech Republic | 61.0 | 60.6 | 59.9 | 58.7 | 57.4 | 56.9 | 57.0 | 57.1 | 56.3 | 56.0 | 56.3 | 56.8 | 57.3 | 57.6 |
| Denmark | 67.0 | 67.4 | 69.4 | 70.3 | 71.6 | 72.1 | 71.4 | 72.6 | 70.5 | 72.0 | 70.8 | 73.2 | 73.3 | 74.4 |
| Finland | 59.0 | 59.5 | 60.4 | 61.3 | 63.6 | 64.5 | 65.4 | 66.1 | 65.7 | 65.5 | 66.5 | 67.3 | 68.5 | 69.0 |
| France | 51.6 | 51.8 | 51.7 | 52.4 | 53.0 | 54.3 | 55.2 | 55.8 | 57.6 | 57.7 | 58.0 | 58.2 | 59.4 | 60.1 |
| Germany | 55.3 | 55.5 | 55.3 | 56.3 | 57.4 | 58.1 | 58.7 | 58.8 | 58.7 | 59.2 | 59.6 | 61.4 | 63.2 | 64.3 |
| Greece | 38.0 | 38.5 | 39.1 | 40.3 | 40.7 | 41.3 | 41.2 | 43.1 | 44.5 | 45.5 | 46.2 | 47.5 | 48.1 | 49.0 |
| Hungary | 45.9 | 45.5 | 45.5 | 47.3 | 48.9 | 49.6 | 49.8 | 49.8 | 50.9 | 50.7 | 51.0 | 51.2 | 50.9 | 50.6 |
| Iceland | 76.8 | 76.5 | 75.6 | 78.3 | 80.2 | 81.0 | 81.1 | 79.8 | 81.2 | 79.4 | 81.2 | 81.6 | 81.7 | 80.3 |
| Ireland | 41.5 | 43.3 | 44.7 | 48.2 | 51.3 | 53.3 | 54.0 | 55.0 | 55.2 | 55.6 | 57.9 | 58.7 | 60.3 | 60.5 |
| Italy | 35.4 | 36.0 | 36.4 | 37.3 | 38.3 | 39.6 | 41.1 | 42.0 | 42.7 | 45.2 | 45.3 | 46.3 | 46.6 | 47.2 |
| Japan | 56.4 | 56.8 | 57.6 | 57.2 | 56.7 | 56.7 | 57.0 | 56.5 | 56.8 | 57.4 | 58.1 | 58.8 | 59.5 | 59.7 |
| Korea | 50.5 | 51.1 | 51.6 | 47.3 | 48.1 | 50.0 | 50.9 | 52.0 | 51.1 | 52.2 | 52.5 | 53.1 | 53.2 | 53.2 |
| Luxembourg | 42.2 | 43.6 | 45.4 | 45.6 | 48.5 | 50.0 | 50.8 | 51.5 | 50.9 | 51.9 | 53.7 | 54.6 | 54.5 | 55.8 |
| Mexico | 36.0 | 36.8 | 39.1 | 39.3 | 39.1 | 39.6 | 39.0 | 39.5 | 39.1 | 40.9 | 41.6 | 42.9 | 43.6 | 44.1 |
| Netherlands | 53.9 | 54.9 | 57.4 | 59.1 | 61.1 | 62.7 | 64.1 | 64.8 | 64.7 | 64.1 | 64.8 | 66.4 | 68.5 | 70.2 |
| New Zealand | 61.7 | 63.4 | 62.8 | 62.1 | 63.0 | 63.5 | 64.8 | 65.3 | 65.7 | 66.5 | 68.0 | 68.4 | 69.0 | 69.0 |
| Norway | 68.8 | 70.4 | 72.2 | 73.6 | 73.8 | 74.0 | 73.8 | 73.9 | 72.7 | 72.7 | 72.0 | 72.3 | 74.0 | 75.4 |
| Poland | 51.8 | 51.8 | 51.8 | 52.2 | 51.6 | 48.9 | 47.8 | 46.4 | 46.2 | 46.4 | 47.0 | 48.2 | 50.6 | 52.4 |
| Portugal | 54.8 | 55.6 | 57.2 | 58.3 | 59.5 | 60.5 | 61.0 | 60.8 | 60.6 | 61.7 | 61.7 | 62.0 | 61.9 | 62.5 |
| Slovak Republic | 53.0 | 54.6 | 54.0 | 53.5 | 52.1 | 51.5 | 51.8 | 51.4 | 52.2 | 50.9 | 50.9 | 51.9 | 53.0 | 54.6 |
| Spain | 32.5 | 33.8 | 35.2 | 36.5 | 39.1 | 42.0 | 43.8 | 44.9 | 46.8 | 49.0 | 51.9 | 54.0 | 55.5 | 55.7 |
| Sweden | 70.9 | 69.9 | 68.9 | 69.4 | 70.9 | 72.2 | 73.5 | 73.4 | 72.8 | 71.8 | 71.8 | 72.1 | 73.2 | 73.2 |
| Switzerland | 65.6 | 67.1 | 67.8 | 68.8 | 69.6 | 69.4 | 70.7 | 71.5 | 70.7 | 70.3 | 70.4 | 71.1 | 71.6 | 73.5 |
| Turkey | 30.2 | 30.3 | 28.0 | 28.5 | 28.9 | 26.2 | 26.3 | 26.6 | 25.2 | 24.3 | 23.7 | 23.8 | 22.8 | 23.5 |
| United Kingdom | 62.5 | 63.3 | 64.0 | 64.2 | 65.0 | 65.6 | 66.0 | 66.3 | 66.4 | 66.6 | 66.7 | 66.8 | 66.3 | 66.9 |
| United States | 65.8 | 66.3 | 67.1 | 67.4 | 67.6 | 67.8 | 67.1 | 66.1 | 65.7 | 65.4 | 65.6 | 66.1 | 65.9 | 65.5 |
| OECD total | 53.2 | 53.6 | 54.2 | 54.4 | 54.9 | 55.2 | 55.3 | 55.3 | 55.3 | 55.7 | 56.1 | 56.9 | 57.5 | 57.8 |
| Brazil | 53.1 | 50.3 | 50.7 | 50.1 | 51.3 | .. | 51.3 | 52.9 | 52.9 | 54.3 | 55.3 | 55.9 | 55.8 | 56.8 |
| Chile | .. | 35.5 | 35.5 | 36.9 | 36.3 | 35.7 | 35.8 | 35.8 | 37.1 | 38.8 | 38.7 | 40.5 | 41.6 | 43.2 |
| Estonia | 60.6 | 60.5 | 60.5 | 60.5 | 57.9 | 57.0 | 57.3 | 57.8 | 58.8 | 59.8 | 61.9 | 65.1 | 65.7 | 66.3 |
| Israel | 48.1 | 48.6 | 48.4 | 48.7 | 49.8 | 50.9 | 50.4 | 50.2 | 50.6 | 51.0 | 52.5 | 53.3 | 54.6 | 55.6 |
| Russian Federation | 59.4 | 58.5 | 55.8 | 54.0 | 57.5 | 59.3 | 59.3 | 61.0 | 60.8 | 61.7 | 62.8 | 63.6 | 65.1 | 64.9 |
| Slovenia | 57.9 | 57.7 | 59.0 | 58.8 | 57.9 | 58.5 | 58.9 | 58.6 | 57.6 | 60.5 | 61.3 | 61.8 | 62.6 | 64.2 |

StatLink <http://dx.doi.org/10.1787/825430142350>

Employment rates: women
Share of women of working age in employment



StatLink <http://dx.doi.org/10.1787/820422085208>



From:
OECD Factbook 2010
Economic, Environmental and Social Statistics

Access the complete publication at:
<https://doi.org/10.1787/factbook-2010-en>

Please cite this chapter as:

OECD (2010), "Employment Rates", in *OECD Factbook 2010: Economic, Environmental and Social Statistics*, OECD Publishing, Paris.

DOI: <https://doi.org/10.1787/factbook-2010-45-en>

This work is published under the responsibility of the Secretary-General of the OECD. The opinions expressed and arguments employed herein do not necessarily reflect the official views of OECD member countries.

This document and any map included herein are without prejudice to the status of or sovereignty over any territory, to the delimitation of international frontiers and boundaries and to the name of any territory, city or area.

You can copy, download or print OECD content for your own use, and you can include excerpts from OECD publications, databases and multimedia products in your own documents, presentations, blogs, websites and teaching materials, provided that suitable acknowledgment of OECD as source and copyright owner is given. All requests for public or commercial use and translation rights should be submitted to rights@oecd.org. Requests for permission to photocopy portions of this material for public or commercial use shall be addressed directly to the Copyright Clearance Center (CCC) at info@copyright.com or the Centre français d'exploitation du droit de copie (CFC) at contact@cfcopies.com.